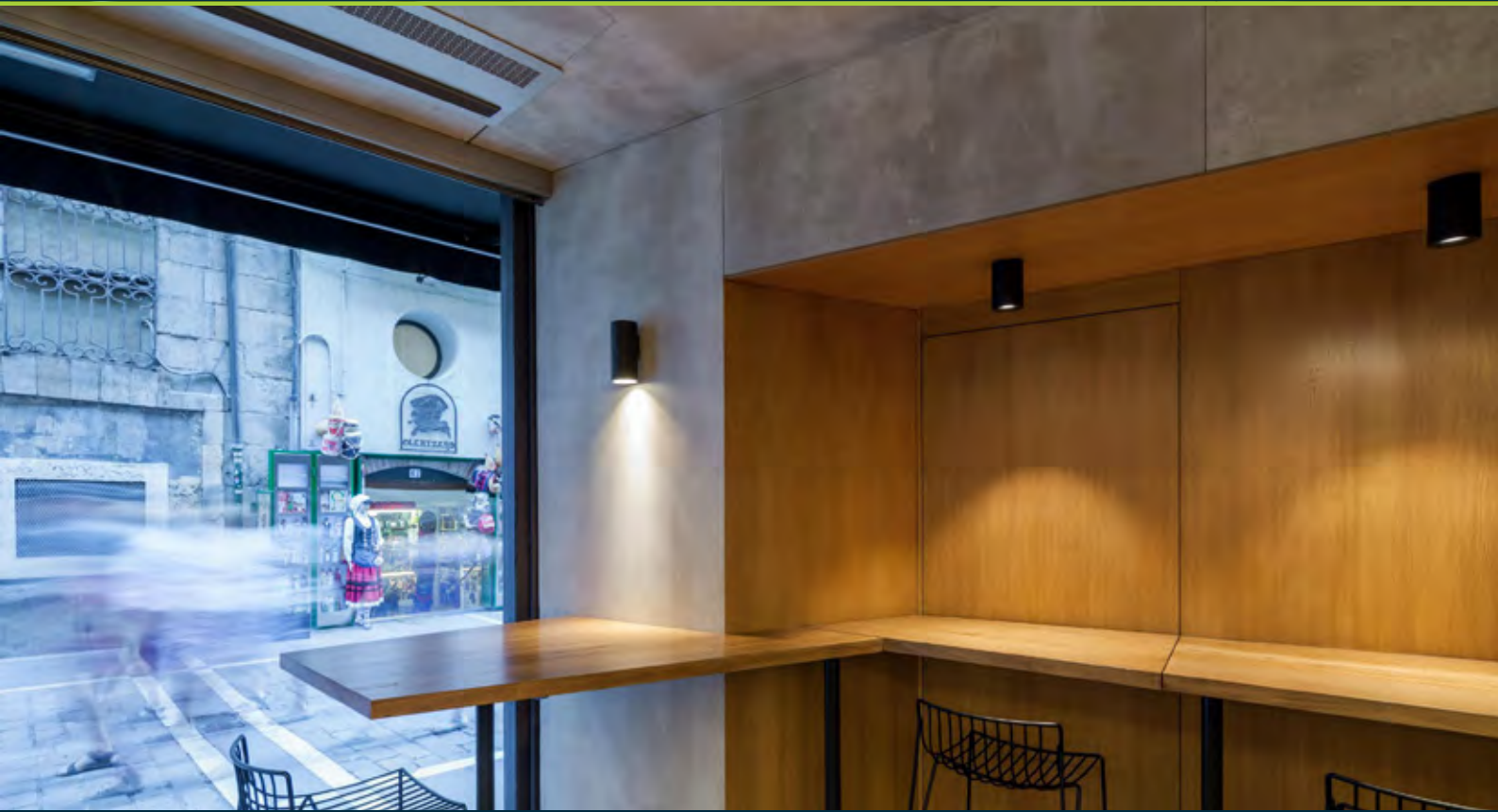




Viroc
CONCRETE FEATURE WALL PANELS

Viroc CONCRETE FEATURE WALL PANELS



Concrete style and strength, the clever way

From raw industrial vibes to a sophisticated urban feel, concrete is on the rise in interior design. Viroc is the clever new product making concrete style more achievable (with big functional benefits).

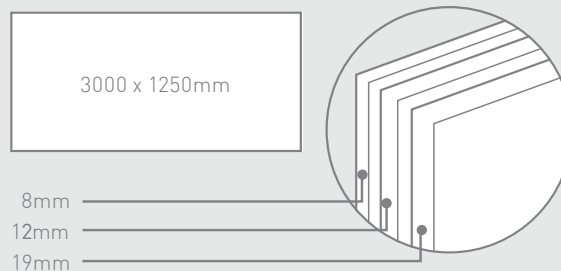
A cement bonded particle board (CBPB) material, Viroc combines the flexibility of pine wood particles with the strength and durability of cement. With the look of real concrete panels, it's the smart way to ensure interior walls make a statement in contemporary homes, hotels, restaurants, foyers and commercial fit-outs.

Take your pick of textures, with the choice of a polished, raw or sanded finish in different colours. Select contrasting shades or juxtaposition concrete-look panels with other materials for an elegant effect.

Go understated or choose to stand out: Viroc makes it all possible. And Viroc offers much more than good looks. It has the easy workability and installation of wood backed by structural strength you can count on. Great sound and thermal insulation boosts the comfort factor for modern living, dining, relaxing, meeting, working or shopping.



PROFILES



Other size and thicknesses available on order.

 Download the latest CAD files from the product section of modinex.com.au

Viroc

Product Code	Cover	Thickness mm	Profile Height mm	Profile Length mm	Profile Width mm
PR-VRC-COM-08X3000X1250-BLK-POL	3000mm	8mm	N/A	3000	1250
PR-VRC-COM-08X3000X1250-BLK-RAW	3000mm	8mm	N/A	3000	1250
PR-VRC-COM-08X3000X1250-GRY-POL	3000mm	8mm	N/A	3000	1250
PR-VRC-COM-08X3000X1250-GRY-RAW	3000mm	8mm	N/A	3000	1250
PR-VRC-COM-12X3000X1250-BLK-POL	3000mm	12mm	N/A	3000	1250
PR-VRC-COM-12X3000X1250-BLK-RAW	3000mm	12mm	N/A	3000	1250
PR-VRC-COM-12X3000X1250-GRY-POL	3000mm	12mm	N/A	3000	1250
PR-VRC-COM-12X3000X1250-GRY-RAW	3000mm	12mm	N/A	3000	1250
PR-VRC-COM-12X3000X1250-OCH-POL	3000mm	12mm	N/A	3000	1250
PR-VRC-COM-12X3000X1250-RED-POL	3000mm	12mm	N/A	3000	1250
PR-VRC-COM-12X3000X1250-WTE-POL	3000mm	12mm	N/A	3000	1250
PR-VRC-COM-19X3000X1250-BLK-POL	3000mm	19mm	N/A	3000	1250
PR-VRC-COM-19X3000X1250-BLK-RAW	3000mm	19mm	N/A	3000	1250
PR-VRC-COM-19X3000X1250-GRY-POL	3000mm	19mm	N/A	3000	1250
PR-VRC-COM-19X3000X1250-GRY-RAW	3000mm	19mm	N/A	3000	1250







Ideal Uses


With its concrete-look moods and variety of colours and finishes, Viroc signals a new era for internal walls.


- Restaurants
- Foyers
- Hotels and bars
- Reception areas
- Auditoriums
- Schools
- Bathrooms and kitchens
- Retail fit-outs
- Commercial fit-outs
- Table tops

There are so many great reasons to choose Viroc.


 **Diverse Looks**
Natural concrete finish. Elegant concrete-look panels (in variety of finishes) for interior walls

 **Sound Insulation**
Delivers good sound insulation according to board thickness (airborne sound resistance up to 33 dB for thickness of 12mm)


 **External Application**
Viroc can be used externally, including the 12mm thick with a sealant


 **Reversible Sheets**
Polished one side and Raw the other, providing great choice options. Sanded is also available upon request


 **Fire Resistance**
Group 1 - Fire Rated

 **Thermal Insulation**
Excellent thermal insulation, ideal for both hot and cold climates


 **Zero Asbestos**
Viroc sheets are completely free of asbestos

 **Structural Strength**
The board's bending strength allows it to be used as a versatile structural support material that carries weight well. The 19mm thick sheets can be used in flooring

 **Machinability**
Viroc can be cut, drilled and sanded according to the desired purpose

 **Easy to Install**
The tools and fastening systems are identical to those used with wood, so installation is easy and straightforward. No need to render walls, employ specialised concrete polishers or allocate drying time

 **Pest and Rot Resistant**
Resistant to fungi, termites and insects

 **Moisture Resistant**
Impermeable to water and resistant to water vapour, however it does stain if not sealed



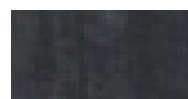
Colours and textures*

Double-sided panels provide flexible finishes for different moods and styles:

- **Raw:** natural panel with cement surfaces.
- **Polished:** machine polished raw side for glossier concrete-look surface.



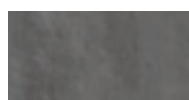
VIROC BLACK
BLK-RAW



VIROC BLACK
BLK-POLISHED



VIROC GREY
GRY-RAW



VIROC GREY
GRY-POLISHED



VIROC OCHRE

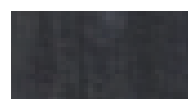


VIROC OCHRE
- POLISHED

*specify colour code after sheet size when ordering



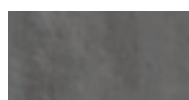
VIROC RED



VIROC RED
- POLISHED



VIROC WHITE



VIROC WHITE
- POLISHED



VIROC YELLOW
- POLISHED



Further product information and downloads for Viroc are available at modinex.com.au



Installation Instructions



Product Care



CAD files



Technical Information



Like what you see?

Get in touch and order your free sample today!

Phone 1800 156 455 **Email** hello@modinex.com.au

For further product information and downloads **Visit** modinex.com.au

modinex GROUP
LEADING EDGE ARCHITECTURAL